



2194587741



Maximize productivity

SANITARY MANHOLE COVER

Future-Forward Solutions
<https://www.tianxuequipment.com>

Round Pressure Manhole

Applications

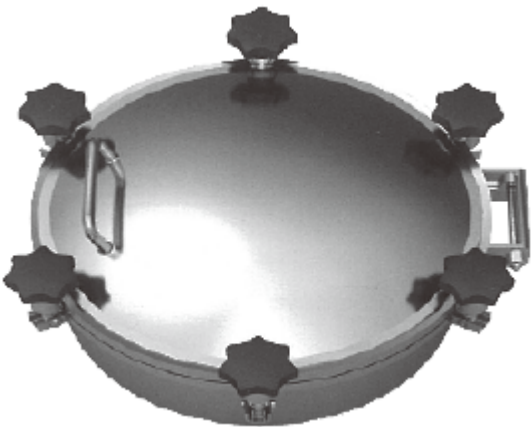
Pressure type manhole cover series are major use to the pressure tank of food,wine-producing,beverage and pharmacy industries and so on.

Operating principles

When need repair the storage tank, first to unscrew the hand wheel (use to fixed manhole cover and supply the force to axial seal),then open the manhole cover by the handle which fixed in the manhole cover(manhole cover is jointed together by hinge and frame,to ensure accurately closure when the manhole cover close, and the hinge can let the opened manhole cover stop above 30 degree angle of upright position),thus the serviceman can check the storage tank;when the manhole cover closed, both of the seal of manhole cover and the tank can ensure complete sealing,so ,we can avoid leakage of the tank.

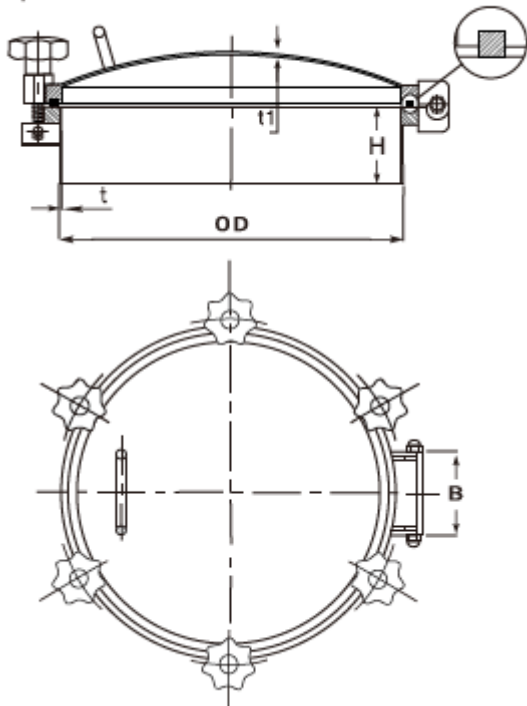
Design Standard

Pressure manhole cover can have above 4 hand wheel to fix the device, the hand wheel quantity is depend on the size, the pressure,and the temperature. Also we can produce based on your requirement.



Feature:
Gasket: Silicone/EPDM/NBR/FPM in accordance with FDA 177.2600.
Material: 304(1.4301), 316L(1.4404)
Internal surface: 0.8/um-0.4um
Outside surface: Mirror polished, Matte,sand-blasting finished.

Specification



Technical specification

Size	OD(mm)	t (mm)	H(mm)	t1(mm)	Handwheel I	Pressure (Bar)	Code
200	206	3	100	3	4	1-3	YL331020
300	306	3	100	3	4	1-3	YL331030
350	356	3	100	3	4-6	1-3	YL331035
400	406	3	100	3	4-6	1-3	YL331040
430	436	3	100	3	4-6	1-3	YL331043
450	456	3	100	3	6	1-3	YL331045
500	508	4	100	3	6	1-3	YL331050
600	608	4	100	4	6	1-3	YL331060
Height(H) and Frame(t)and cover (t1) can be changed according to your requirement.							

Round Non Pressure Manhole

Applications

The Access Tank Cover - Circular Cover stainless steel manhole cover is used on the top of tanks or containers across the dairy, food, beverage, and biopharm industries, where a hygienic closeable means of access to the interior of the tank is required.

Operating principles

When need repair the storage tank, first to unscrew the hand wheel (use to fix manhole cover and supply the force to axial seal), then open the manhole cover by the handle which is fixed in the manhole cover (manhole cover is jointed together by hinge and frame, to ensure accurate closure when the manhole cover closes, and the hinge can let the opened manhole cover stop above 30 degree angle of upright position), thus the serviceman can check the storage tank; when the manhole cover closes, both of the seal of manhole cover and the tank can ensure complete sealing, so we can avoid leakage of the tank.



Feature:

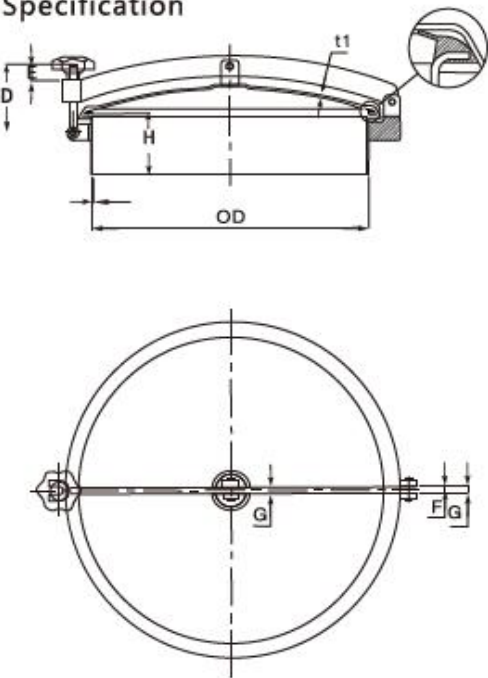
Gasket: Silicone/EPDM/NBR/FPM in accordance with FDA 177.2600.

Material: 304(1.4301), 316L(1.4404)

Internal surface: 0.8/um-0.4um

Outside surface: Mirror polished, Matte, sand-blasting finished.

Specification



Technical specification

Size	OD(mm)	t(mm)	H(mm)	t1(mm)	Pressure(Bar)	Code
200	200	2.5	100	2	0-0.1	WY201020
219	219	2.5	100	2	0-0.1	WY201019
300	300	2.5	100	2	0-0.1	WY201030
350	350	2.5	100	2	0-0.1	WY201035
400	400	3	100	2.5	0-0.1	WY201040
430	430	3	100	2.5	0-0.1	WY201043
450	450	3	100	2.5	0-0.1	WY201045
500	500	3	100	2.5	0-0.1	WY201050
600	600	4	101	3	0-0.1	WY201060
Height(H) and Frame(t) and cover (t1) can be changed according to your requirement.						

Oval Inward Manhole

Applications

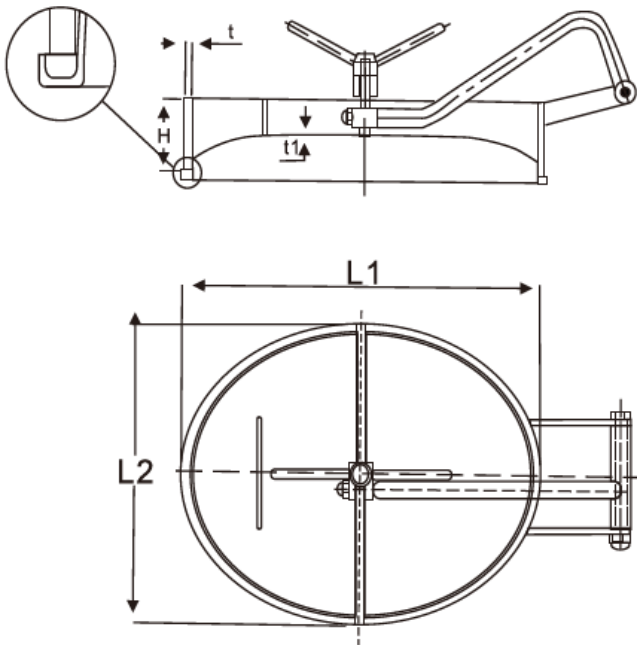
The manhole cover is mainly used for tanks in the fields of food, beverage, chemical, etc.

Operating principles

When need repair the storage tank, first to unscrew the hand wheel (use to fixed manhole cover and supply the force to axial seal),then open the manhole cover by the handle which fixed in the manhole cover(manhole cover is jointed together by hinge and frame,to ensure accurately closure when the manhole cover close, and the hinge can let the opened manhole cover stop above 30 degree angle of upright position),thus the serviceman can check the storage tank;when the manhole cover closed, both of the seal of manhole cover and the tank can ensure complete sealing,so ,we can avoid leakage of the tank.



Feature:
Gasket: Silicone/EPDM/NBR/FPM in accordance with FDA 177.2600.
Material: 304(1.4301), 316L(1.4404)
Internal surface: 0.8/um-0.4um
Outside surface: Mirror polished, Matte,sand-blasting finished.



Technical specification

Size	OD(mm) L1 *L2	t (mm)	H(mm)	t1(mm)	Pressur e(Bar)	Code
430 *330	430 *330	8	75	2.5	1-3	WK758430
435 *335	435 *335	10	75	2.5	1-3	WK758435
450 *350	450 *350	8	75	3	1-3	WK758450
530 *430	530 *430	10	75	3	1-3	WK758530
535 *435	535 *435	12	75	3	1-3	WK758535
635 *525	635 *525	12	80	3	1-3	WK758635

Height(H) and Frame(t)and cover (t1) can be changed accoring to your requirment.

Oval Inward Manhole With Bevel Edge

Applications

The manhole cover is mainly used for tanks in the fields of food, beverage, chemical, etc.

Narrow-body containers (such as ship oil tanks, chemical reaction vessels)

Advantages: Elliptical design (long axis $\geq 600\text{mm}$, short axis $\geq 400\text{mm}$) is suitable for narrow installation surfaces, and the inward-opening structure saves external space.

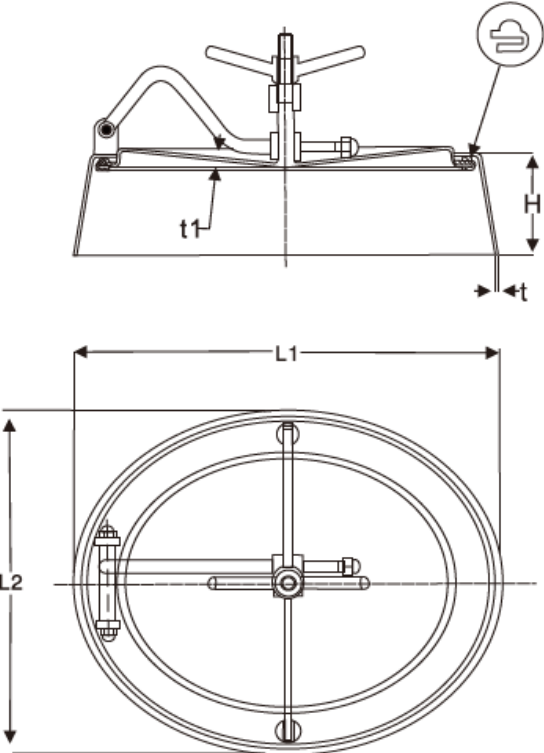
High-pressure/vacuum environment

Sealing design: The beveled flange (with an inclination angle of 30° to 45°) enhances the sealing surface pressure and can withstand working conditions ranging from -0.1 MPa to 0.5 MPa .

Case: A PTA reaction vessel uses this type of manhole, with a leakage rate of less than $1 \times 10^{-6}\text{ Pa}\cdot\text{m}^3/\text{s}$ (helium inspection standard).



Feature:
Gasket: Silicone/EPDM/NBR/FPM in accordance with FDA 177.2600.
Material: 304(1.4301), 316L(1.4404)
Internal surface: $0.8/\mu\text{m}$ - $0.4\mu\text{m}$
Outside surface: Mirror polished, Matte,sand-blasting finished.



Technical specification

Size	OD(mm) L1*L2	t (mm)	H(mm)	t1(mm)	Pressur e(Bar)	Code
550*450	550*450	4	80	3	1-3	XB804550
550*450A	550*450A	5	80	4	1-3	XB80455A
565*465	565*465	5	100	4	1-3	XB804565
580*480	580*480	5	133	4	1-3	XB804580
Height(H) and Frame(t)and cover (t1) can be changed accoring to your requirment.						

Round Pressure Manhole With Sight glass

Introduction

stainless steel manway cover that provides a secure fit for openings onto of tanks or containers that require quick, easy and convenient entry and egress to vessel interiors. It is engineered to withstand vacuum conditions created during cleaning procedures or during production under low pressure conditions up to 1 bar.

1. Chemical and petroleum industry

Monitoring of reaction vessels/distillation towers: Real-time observation of internal reaction conditions (such as polymerization reactions, catalyst activity).

Auxiliary confirmation of tank liquid level: Provides redundant visual inspection in case of malfunction of the level gauge.

2. Pharmaceutical and Biotechnology Engineering

Aseptic process monitoring: Compliant with GMP requirements, observing the cell growth situation in the fermentation tanks (requiring aseptic lighting).

CIP/SIP verification: Confirm the cleaning/sterilization effect through the viewing window.

3. Food and Beverage Industry

Homogenization inspection: Ensure that viscous materials such as chocolate and jam are mixed without any gaps.

Foreign object detection: Quickly identify residual debris in pipelines or debris from equipment wear.



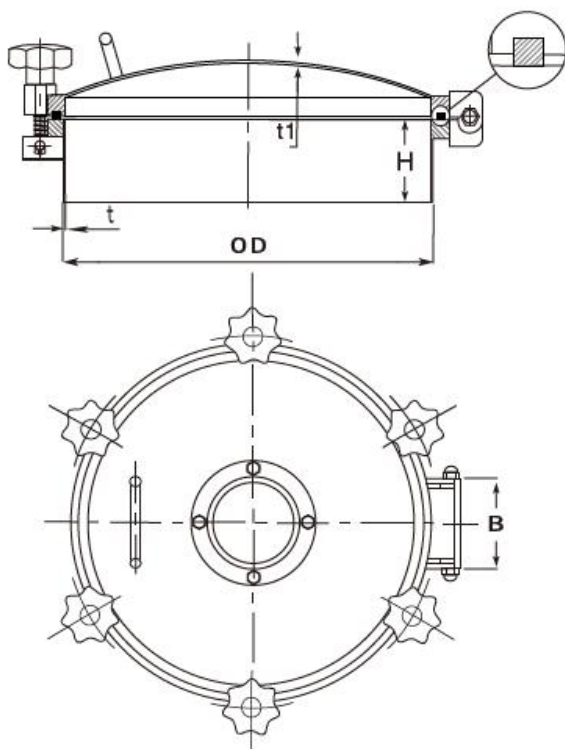
Feature:

Gasket: Silicone/EPDM/NBR/FPM in accordance with FDA 177.2600.

Material: 304(1.4301), 316L(1.4404)

Internal surface: 0.8/um-0.4um

Outside surface: Mirror polished, Matte, sand-blasting finished.



Technical specification

Size	OD(mm) L1*L2	t (mm)	H(mm)	t1(mm)	Pressur e(Bar)	Code
200	206	3	100	3	1-3	SJ3310200
300	306	3	100	3	1-3	SJ3310300
350	356	3	100	3	1-3	SJ3310350
400	406	3	100	3	1-3	SJ3310400
430	436	3	100	3	1-3	SJ3310430
450	456	3	100	3	1-3	SJ3310450
500	508	5	100	3	1-3	SJ3310500
600	608	5	100	4	1-3	SJ3310600

Height(H) and Frame(t)and cover (t1) can be changed accoring to your requirement.

Rectangular Manhole With Two Intersectant Arms

Introduction

stainless steel manway cover that provides a secure fit for openings onto of tanks or containers that require quick, easy and convenient entry and egress to vessel interiors.It is engineered to withstand vacuum conditions created during cleaning procedures or during production under low pressure conditions up to 1 bar.

Applications

The manhole cover is mainly used for tanks in the fields of food, beverage, chemical, etc.



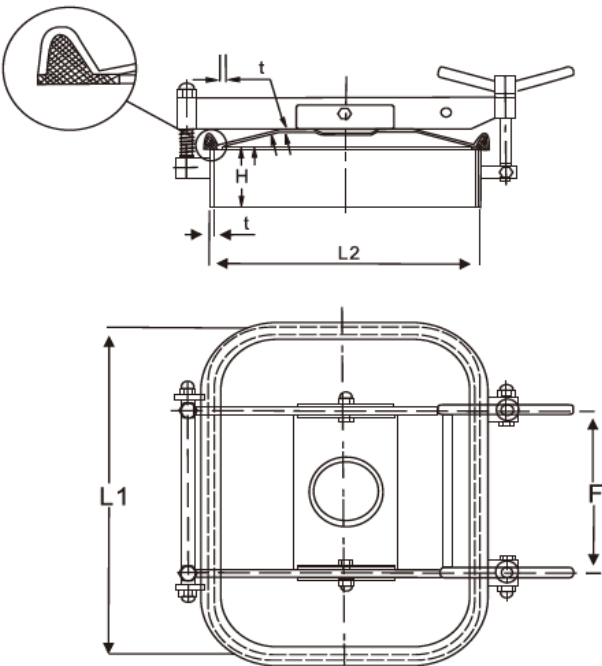
Feature:

Gasket: Silicone/EPDM/NBR/FPM in accordance with FDA 177.2600.

Material: 304(1.4301), 316L(1.4404)

Internal surface: 0.8/um-0.4um

Outside surface: Mirror polished, Matte,sand-blasting finished.



Technical specification

Size	OD(mm) L1 *L2	t (mm)	H(mm)	t1(mm)	Pressur e(Bar)	Code
235*185	235*185	5	70	1.5	1-3	SF5170235
435*335	435*335	8	80	3	1-3	SF8380435
535*435	535*435	8	100	3	1-3	SF8100535
700*500	700*500	12	100	3	1-3	SF1210700
Height(H) and Frame(t)and cover (t1) can be changed according to your requirement.						

Rectangular Manhole With One Intersectant Arm

Introduction

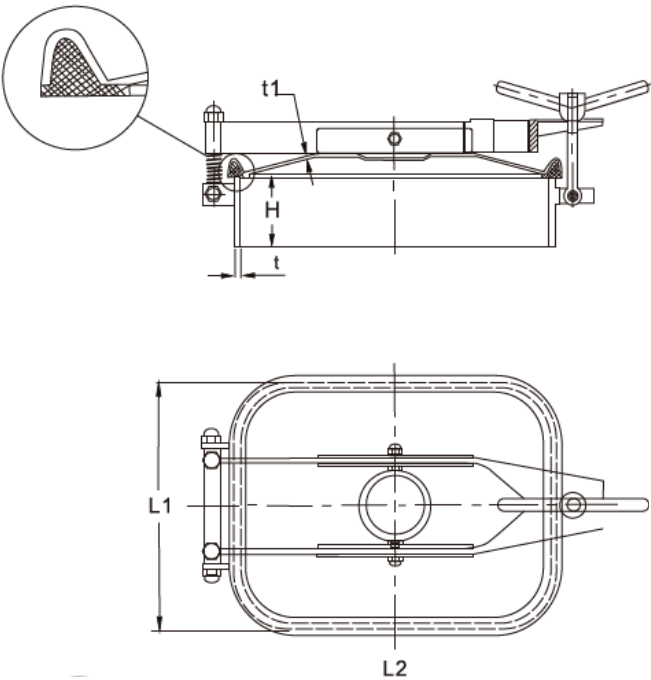
stainless steel manway cover that provides a secure fit for openings onto of tanks or containers that require quick, easy and convenient entry and egress to vessel interiors.It is engineered to withstand vacuum conditions created during cleaning procedures or during production under low pressure conditions up to 1 bar.



Applications

The manhole cover is mainly used for tanks in the fields of food, beverage, chemical, etc.

Feature:
Gasket: Silicone/EPDM/NBR/FPM in accordance with FDA 177.2600.
Material: 304(1.4301), 316L(1.4404)
Internal surface: 0.8/um-0.4um
Outside surface: Mirror polished, Matte,sand-blasting finished.



Technical specification

Size	OD(mm) L1 *L2	t (mm)	H(mm)	t1(mm)	Pressur e(Bar)	Code
235*185	235*185	5	70	1.5	1-3	DF5170235
435*335	435*335	8	80	3	1-3	DF8380435
535*435	535*435	8	100	3	1-3	DF8100535
700*500	700*500	12	100	3	1-3	DF1210700
Height(H) and Frame(t)and cover (t1) can be changed accoring to your requirment.						

Tank Top Safety Sanitary Component

Introduction

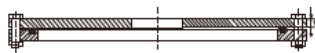
- A: Pressure Relife Valve(ZP45X-1.5P)
- B:Anti-Vacuum Valve (FK45X-1.5P)
- C:Flange Glass
- D:Gas Liquid Shunt.Check Valve



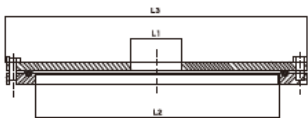
Feature:

Gasket: Silicone/EPDM/NBR/FPM in accordance with FDA 177.2600.
Material: 304(1.4301), 316L(1.4404)
Internal surface: 0.8/um-0.4um
Outside surface: Mirror polished, Matte,sand-blasting finished

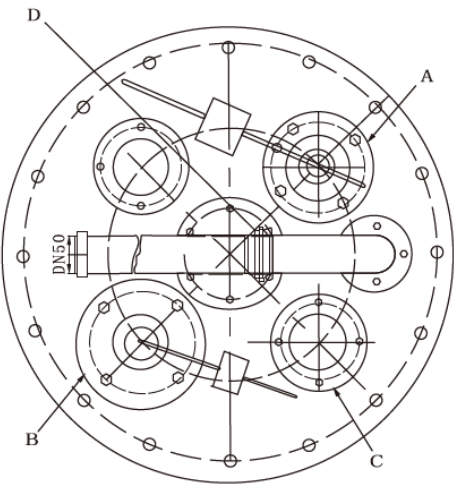
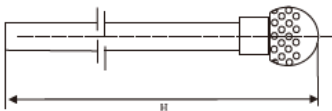
Flange combination-I



Flange combination-2



CIP Cleaning Tube



Technical specification

Size	A	B	C	D	L1	L2	L3	t	H
DN500	DN50	DN80	DN80	DN50	100/125	500	600	20	1200
DN500A						500	620	20	
DN600						600	700	20	
DN600A						600	720	22	
DN600B						600	750	24	
Preessure Relief Valve (A), Anti-Vacuum Valve(B),Flange Glass(C), can be changed accoring to to your requirment.									